

Troy Cup weights.

This Collection belongs to *Tony McCarthy*

211 King Edward Street

Dunedin 9012 New Zealand

PH: 00643-4552875

Email: tonymccarthynz@gmail.com

These are sometimes called bucket weights.

Troy ounce is a traditional unit of gold weight. Troy weight is a system of units of mass customarily used for precious metals and gemstones. **There are 12 troy ounces per troy pound**, (373.24 g) rather than the 16 ounces per pound (453.59 g) found in the more common avoirdupois system.

Note The different size (numbers) of oz cup weights in each set and the different combinations.

Very few cup weights are interchangeable from one set to another. Unless these are made by the same maker in the same time period. The largest weight in the set will have a groove around the outside of the cup. In a true set all the numbers will be in a line and all the oz letters will be in their own line. They should all fit nicely together.

Last updated 16 June 2020



Largest cup weight 128 troy oz.

Total weight 256 Troy oz 11 weights

128 - 64 - 32 - 16 - 8 - 4 - 2 - 1 - $\frac{1}{2}$ - $\frac{1}{4}$ - $\frac{1}{8}$

This may have been the largest set of Cup weights made for the general public.





Largest cup weight 100 Troy oz

100 – 50 - 40 – 30 -20- -missing



Largest weight 64 Troy oz

64 - 32 - 16 - 8 - 4 - 2 - 1 - 1/2 - 1/4 - 1/8

Total weight 128 Troy oz



Two different sets of 64 troy oz weight sets.

Note: The different font and the different way the cups have been stamped



Largest weight 50 Troy oz

Total weight 166 Troy oz 13 weights

50-40-30-20-10-5-4-3-2-1- $\frac{1}{2}$ $\frac{1}{4}$ $\frac{1}{4}$





Largest weight 50 Troy oz

Total weight 166.5 Troy oz





Largest weight 48 Troy oz

Total weight 97 Troy oz 10 weights

48-24-12-6-3-2-1- $\frac{1}{2}$ $\frac{1}{4}$ $\frac{1}{4}$





largest weight 40 Troy oz

Total weight 116 Troy oz 11 weights
40-30-20-10-5-4-3-2-1- $\frac{1}{2}$ - $\frac{1}{4}$ missing $\frac{1}{4}$ -

Has a Crown with EB Vic underneath

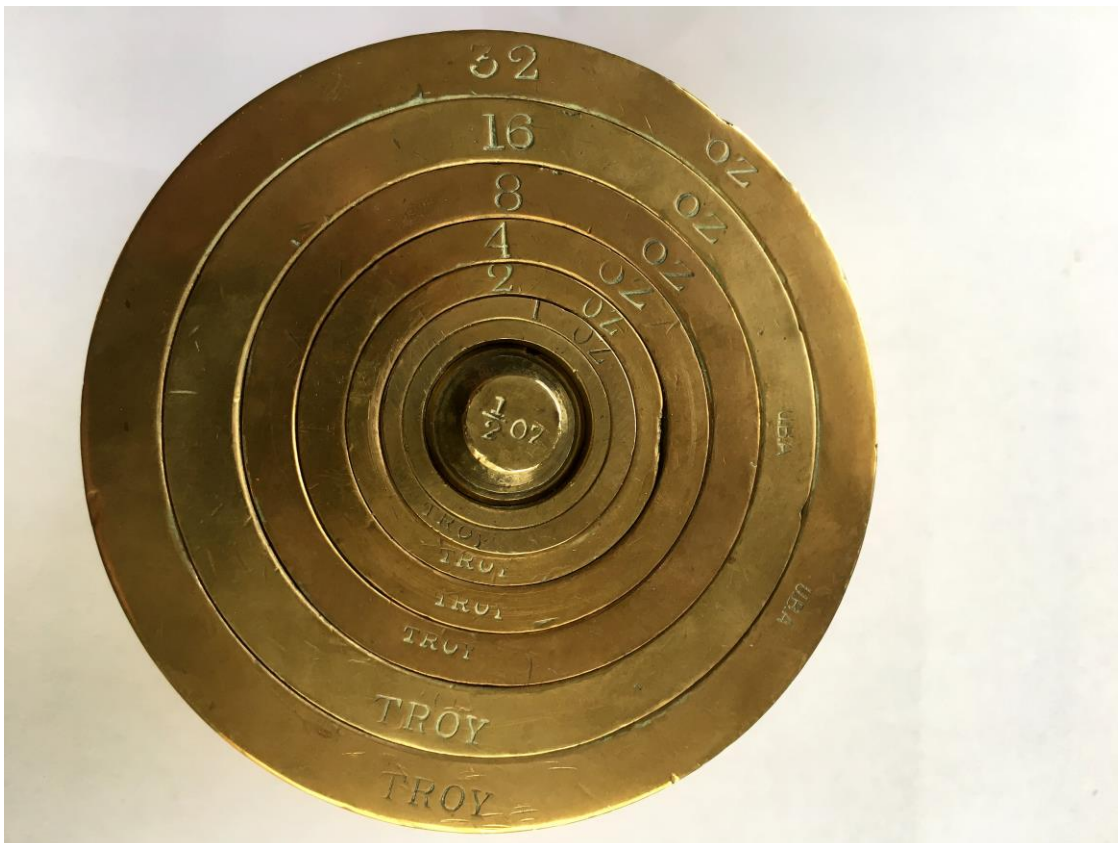




Largest weight 32 Troy oz

Total weight 64 Troy oz 8 weights

32 – 16 – 8 -4 -2 -1 ½ ¼





Largest weight 32 Troy oz

Total weight 62 Troy oz

4 weights

32 – 16 – 8 – 6oz





Largest weight 32 Troy oz – XXXII

Above right - part of a smaller set 8 Troy oz - VIII oz





Largest weight 30 Troy oz

13 weights





Largest weight 24 Troy oz

Total weight 49 Troy oz 9 weight 24-12-6-3-2-1- $\frac{1}{2}$ $\frac{1}{4}$ $\frac{1}{8}$





Largest weight 20 Troy oz

Total weight 42.1 Troy oz 10 weights 20-10-5-3-2-1-.5-.3-.2-.1





Largest weight 20 Troy oz

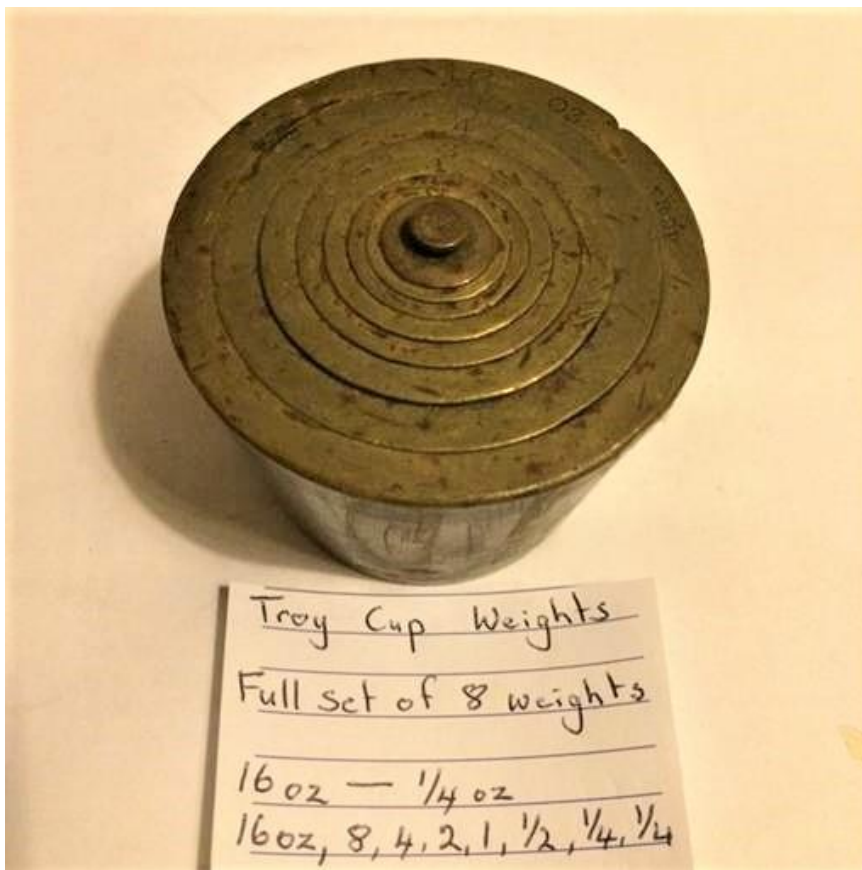
Total weight 46 Troy oz 8 weight 20-10-5-4-3-2-1-1
symbol Crown-ER -370





Largest weight 16 Troy oz

Total weight 32 Troy oz 8 weights 16 -8 -4- 2 -1- $\frac{1}{2}$ $\frac{1}{4}$ $\frac{1}{8}$



Largest Weight 16 Troy oz

Total weight 32 troy oz 8 weights 16 - 8 - 4 - 2 - 1 - 1/2 1/4 1/4





Largest weight 16 Troy oz

Total weight 32 Troy oz 8 weights 16- 8 -2-1- $\frac{1}{2}$ $\frac{1}{4}$ $\frac{1}{4}$





Largest weight 16 Troy oz

Total weight 32 Troy oz 16 - 8 - 4 - 3 - 2 - 1 - ½ missing ----





Largest weight 16 Troy oz

XVI – VIII – III --missing

Label reads Not Legal





Largest weight 12 Troy oz

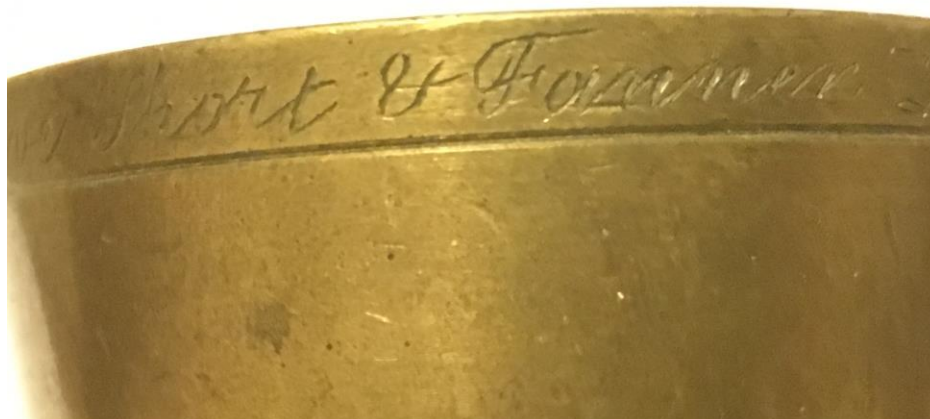
Total weight 25 Troy oz 12 -6-3-2- not original 1- $\frac{1}{2}$ $\frac{1}{4}$ $\frac{1}{4}$



Government of New Zealand 1863

1 lb Troy oz = 12 Troy Oz

De Grave Short & Fanner London





Largest weight 10 Troy oz

Total weight 26 Troy oz. 11 weights 10-5-4-3-2-1-.5-.4-.3-.2-.1





Largest weight 10 Troy oz

Total weight 26 Troy oz 7 weights 10-5-4-3-2-1-1



Two different sets of 10 Troy oz Weights



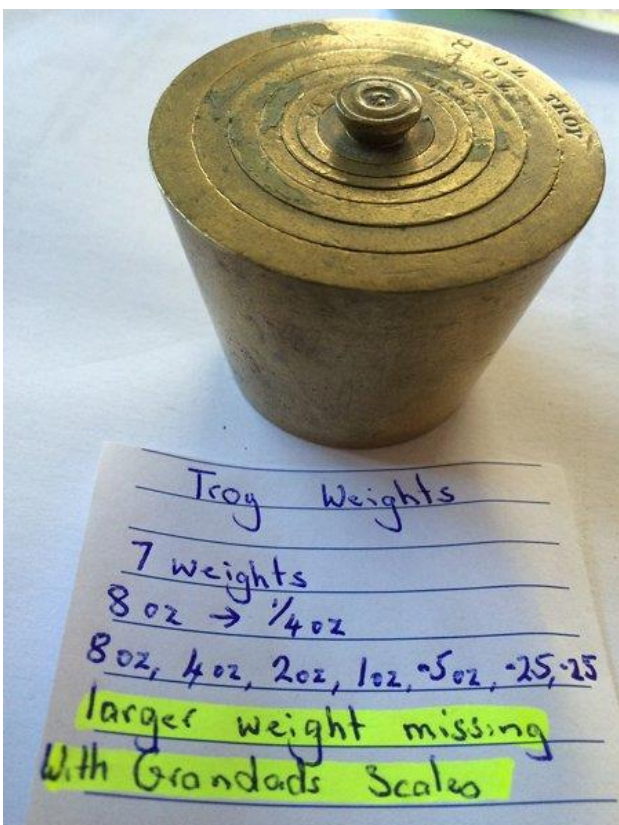


Largest weight 8 Troy oz

Total weight 16 Troy oz

7 weights

8-4-2-1-.5-.25-.25

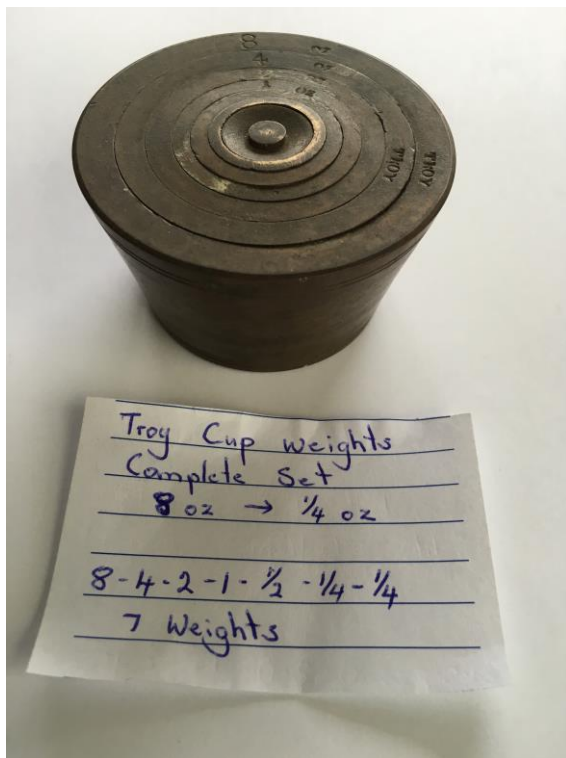




Largest weight 8 Troy oz

Total weight 16oz 7 weights 1 missing 8-4-2-1-.5-.25-.13 ---





Largest weight 8 Troy oz

Total weight 16 Troy oz 7 weights

8 - 4 - 2 - 1 - 1/2 1/4 1/4





Largest weight 8 oz Total weight 16 Troy oz

7 weights 8 - 4 - 2 - 1 - $\frac{1}{2}$ $\frac{1}{4}$ not original $\frac{1}{4}$



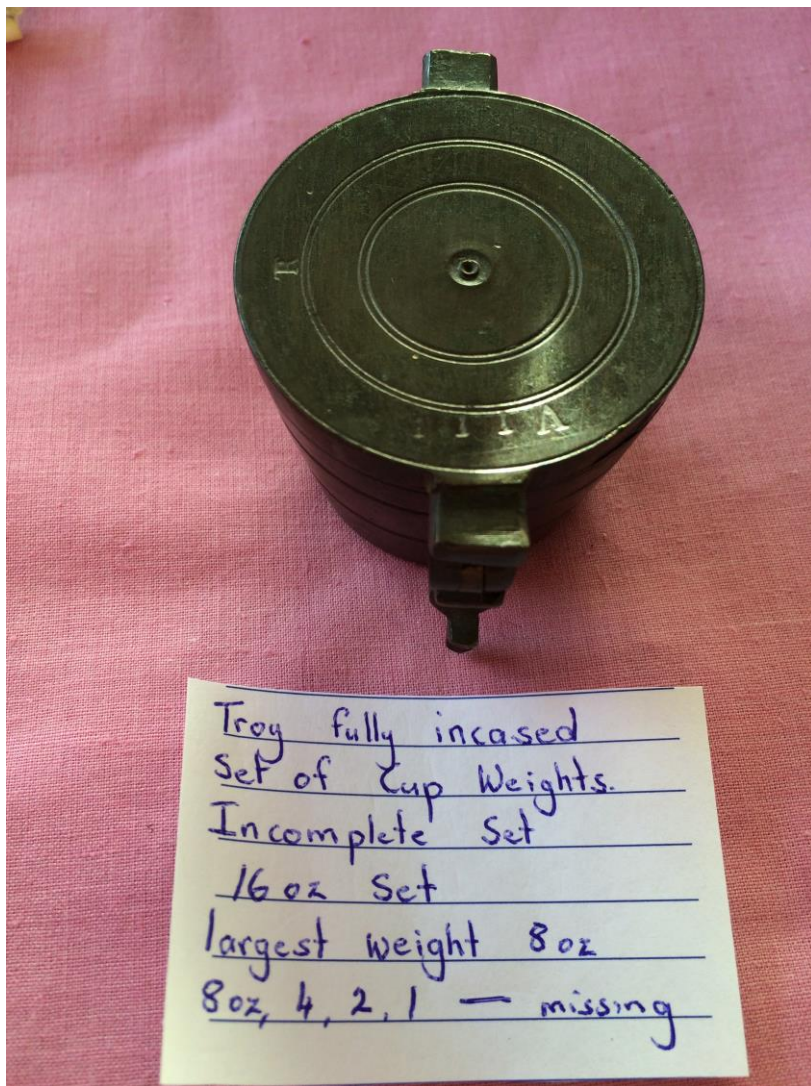
Enclosed cup weights

Largest weight 8oz

Total weight 16?

8-4-2-1-??





Enclosed cup weights

Largest weight 8 Troy oz





largest weight 6 Troy oz

Total weight 13 Troy oz 7 weights 6-3-2-1-.5-.25-.25

Has N.S.W. Australia 2 ?





Largest weight 6 Troy oz

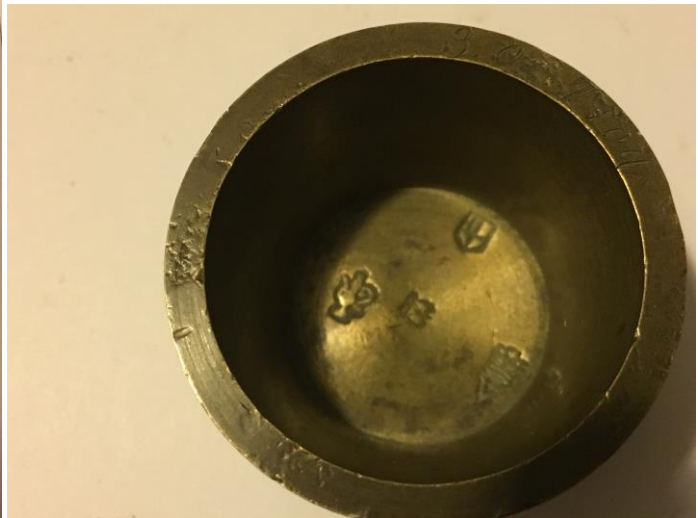
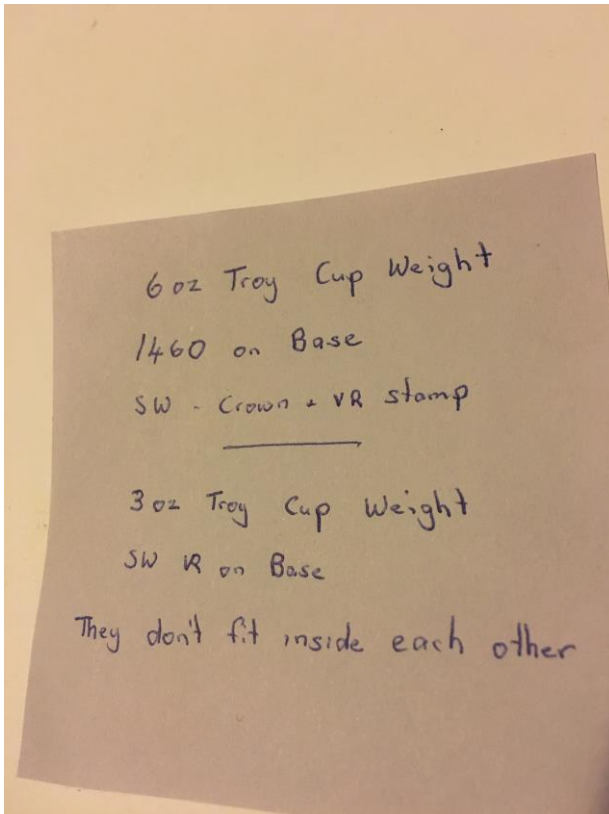
Total weight 13 Troy oz 7 weights

6-3-2-1- not original .5-.25-.25





6 Troy oz De Grave cup weight



3 Troy oz De Grave cup weight

largest weight 5 Troy oz

Total weight

Missing larger and smaller weights.

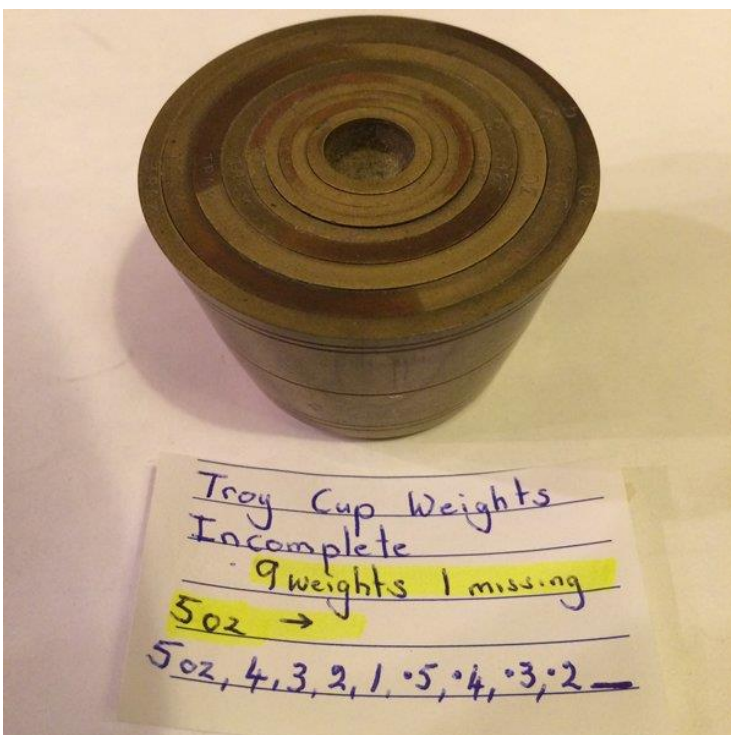




Largest weight 5 Troy oz

Total weight 16.5 Troy oz? 10 weights 1 missing

5-4-3-2-1-.5-.4-.3-.2----

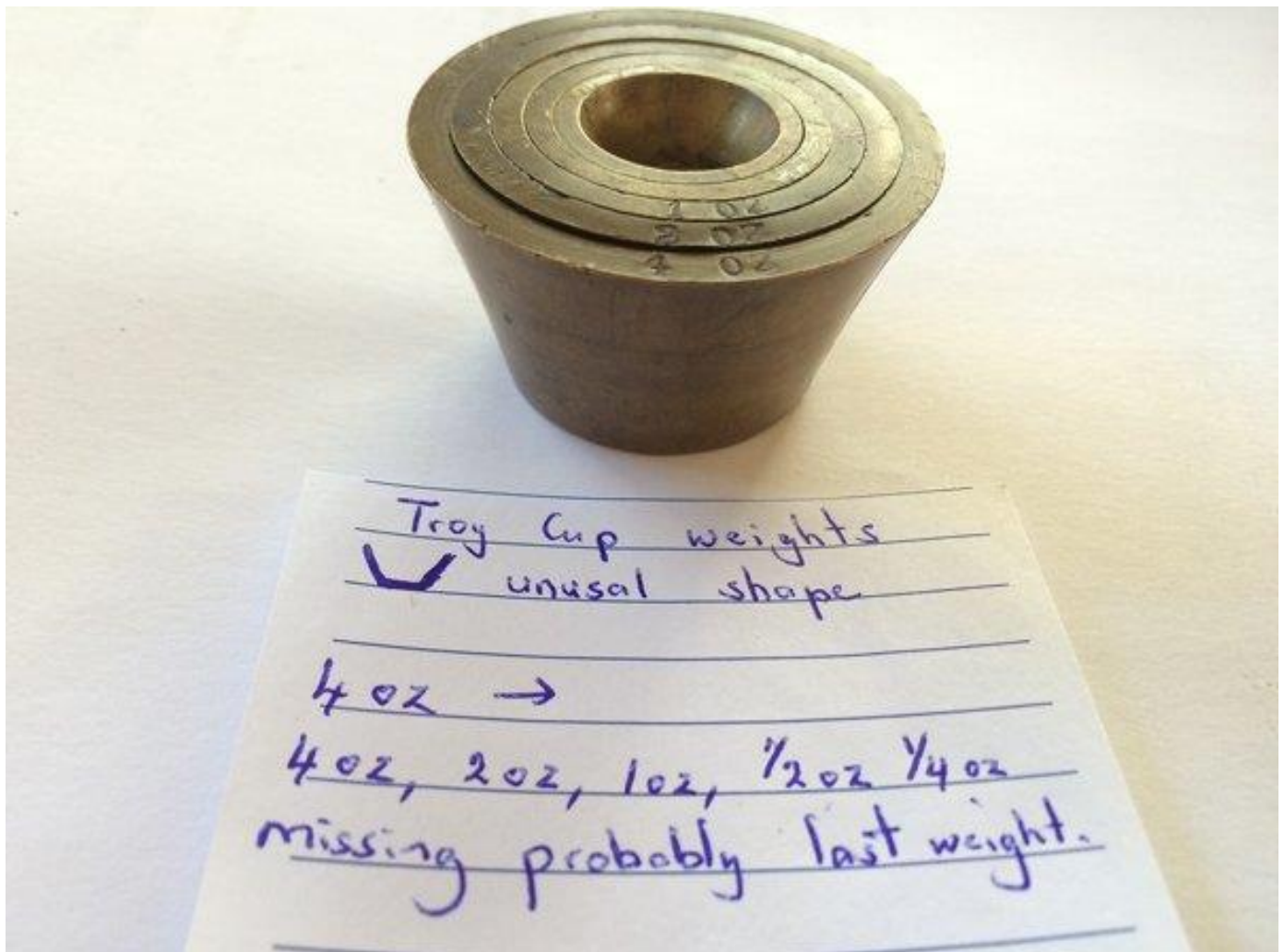




Largest weight 4 Troy oz

Total weight 8 Troy oz ?

4-2-1- $\frac{1}{2}$ - $\frac{1}{4}$ missing $\frac{1}{4}$





Largest weight 4 Troy oz

Total weight 8 Troy oz

6 weights

4 - 2 - 1 - $\frac{1}{2}$ $\frac{1}{4}$ $\frac{1}{4}$





Largest weight 4 Troy oz

Total weight 8 Troy oz

6 weights

4 - 2 - 1 - $\frac{1}{2}$ $\frac{1}{4}$ $\frac{1}{4}$





Largest weight 4 Troy oz

Total weight 8 Troy oz

6 weights

4-2-1- $\frac{1}{2}$ $\frac{1}{4}$ $\frac{1}{4}$





Largest weight 4 Troy oz

Total weight 11 Troy oz ? 7 weights 4-3-2-1-.5-.25 -.25





Largest weight 4 Troy oz

Total weight 8 Troy oz

6 weights

4 -2 -1- $\frac{1}{2}$ $\frac{1}{4}$ $\frac{1}{4}$





Largest weight 4 Troy oz

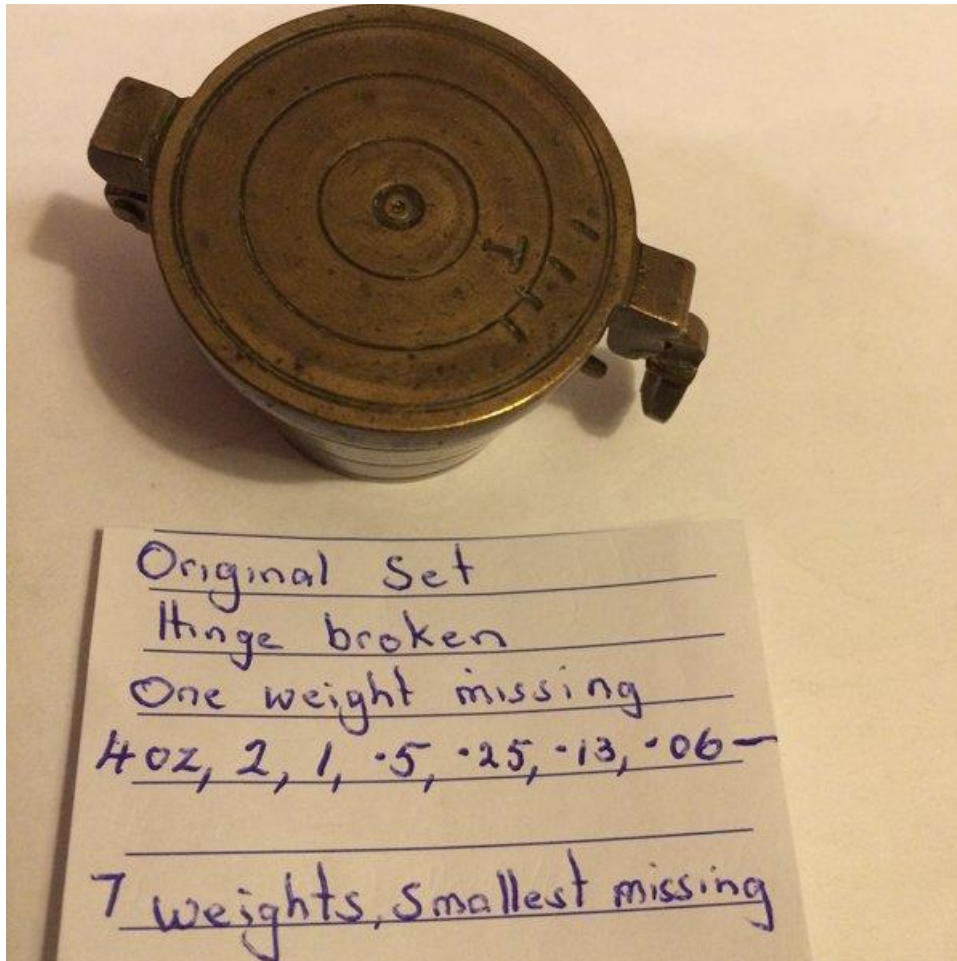
Total weight 8 Troy oz 6 weights 4 -2 -1- $\frac{1}{2}$ $\frac{1}{4}$ $\frac{1}{4}$





Sets of different 4 Troy oz sets

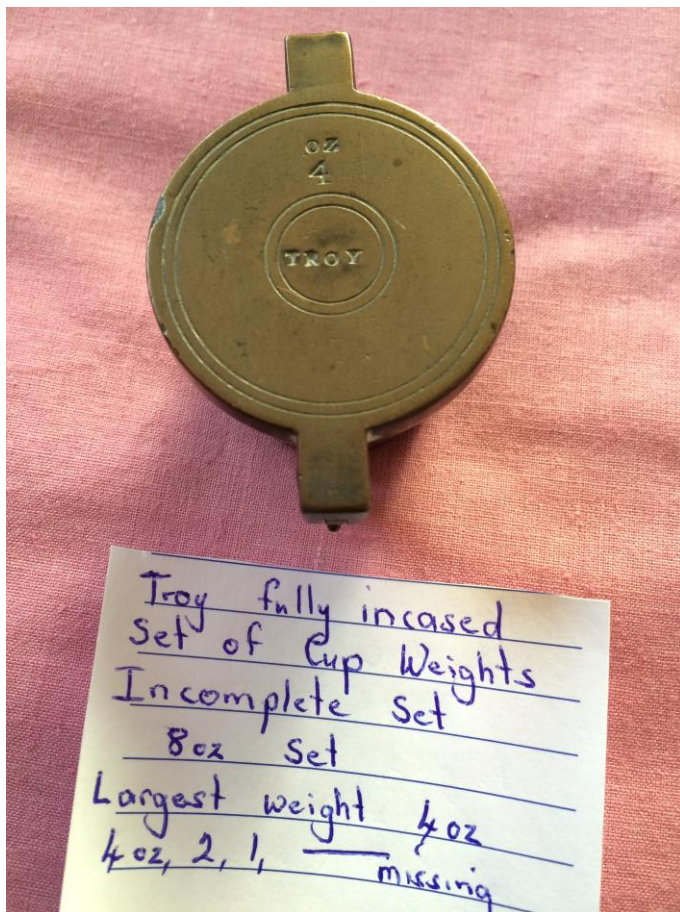
Note: how differently all the numbers and letters line up.



Largest weight 4 Troy oz

Enclosed cup weights. Total weight 8 Troy Oz





Largest Weight 4 Troy oz

Enclosed cup weight set. Total weight 8 troy oz

4 – 2 – 1- -----





Largest weight 3 Troy oz

Total weight 7 troy oz

3-2-1- $\frac{1}{2}$ $\frac{1}{4}$ $\frac{1}{4}$





largest weight 3 Troy oz

Total weight 7.1 Troy oz



Troy Cup Weights

7 Weights

3 oz →

3 oz, 2, 1, .5, .3,
.2, .1

Complete Set



largest weight 3 Troy oz

Total weight 7 Troy oz 3-2-1- $\frac{1}{2}$ $\frac{1}{4}$ missing $\frac{1}{4}$





Largest weight 3 Troy oz

Total weight Troy oz 3 - 2 - 1 - $\frac{1}{2}$ $\frac{1}{4}$ $\frac{1}{4}$





Largest weight 2 Troy oz

Total weight 4 Troy oz

5 weights

2 - 1 - $\frac{1}{2}$ $\frac{1}{4}$ $\frac{1}{4}$





Largest weight 2 Troy oz

Total weight 4 Troy oz

5 weights

2 – 1 – $\frac{1}{2}$ $\frac{1}{4}$ $\frac{1}{4}$



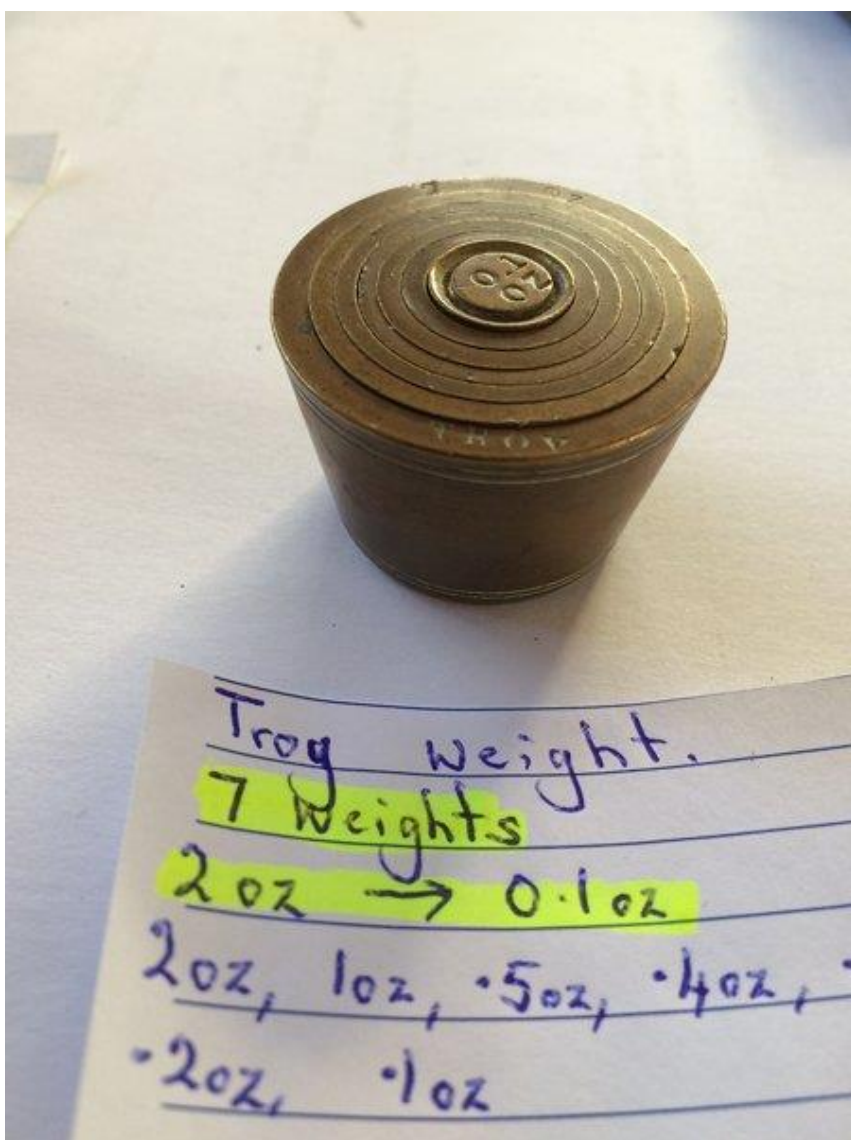


Largest weight 2 Troy oz

Total weight 4.5 Troy oz

7 weights

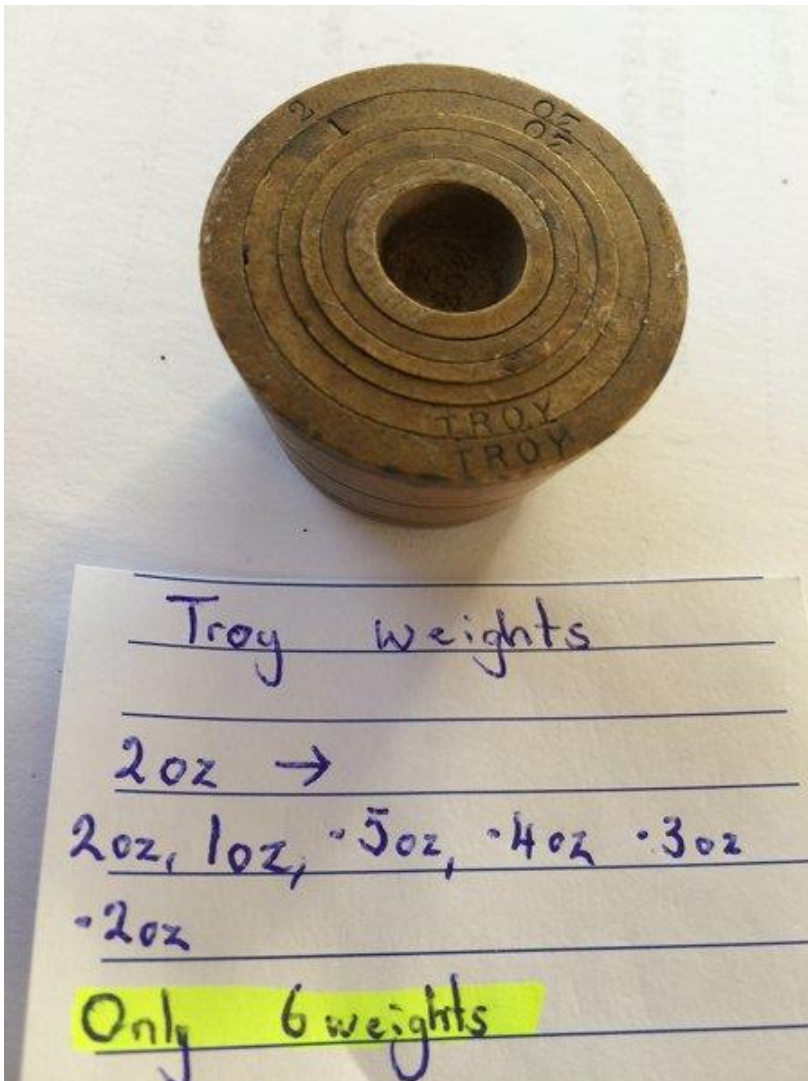
2oz - 1oz - .5 - .4 - .3 - .2 - .1





Largest weight 2 Troy oz

Total weight 6 weights some missing 2-1- .5- .4- .3- .2 --



largest weight of 2 Troy oz.

Note different number & letter configuration.



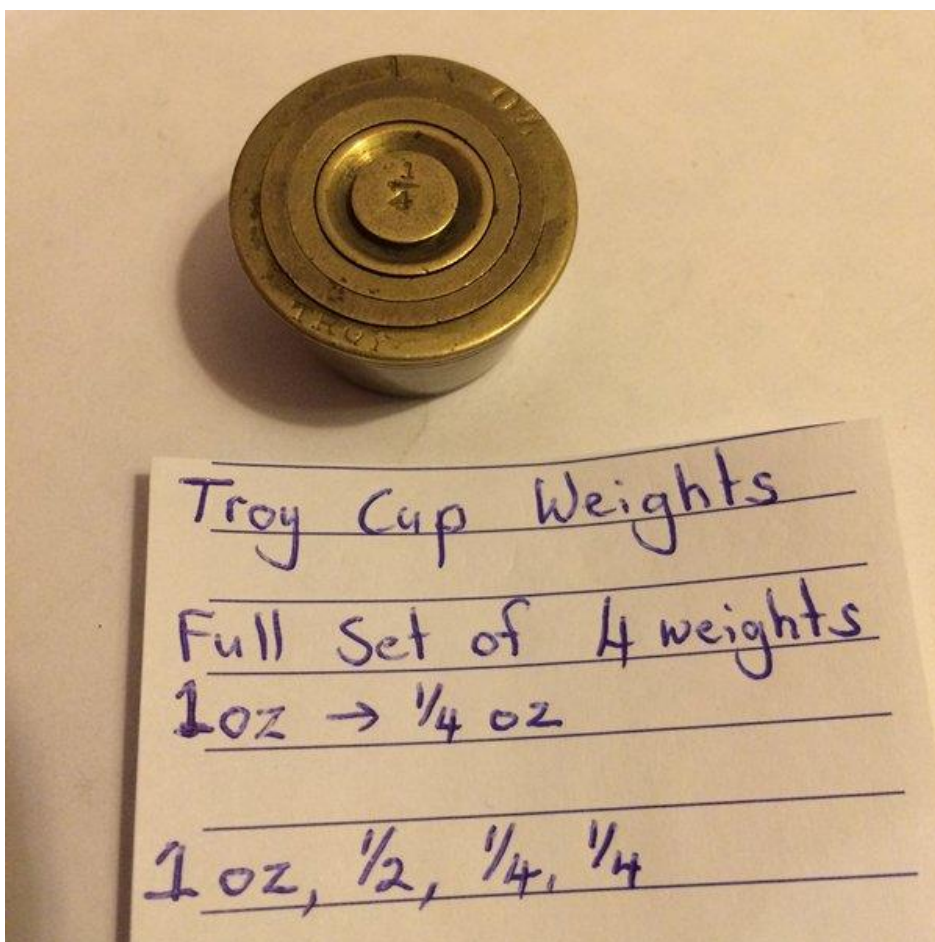
More sets. Largest weight being 2 Troy oz





Largest weight 1 Troy oz

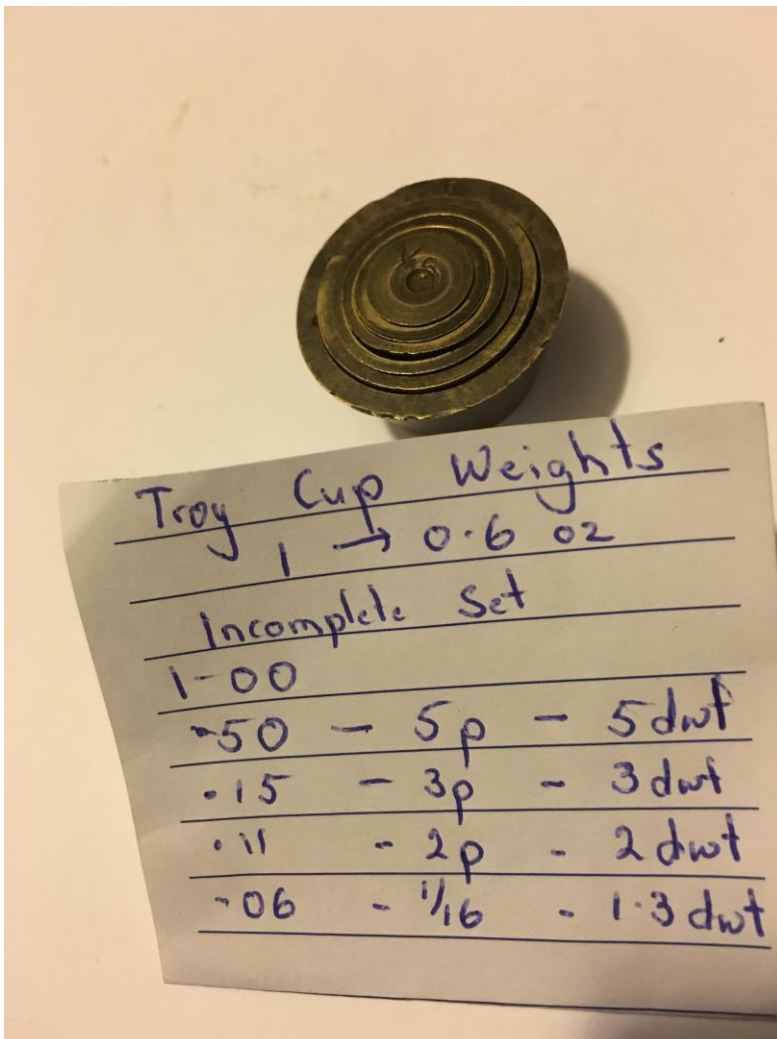
Total weight 2 Troy oz 1 - $\frac{1}{2}$ $\frac{1}{4}$ $\frac{1}{4}$





Largest weight 1 Troy oz

Total weight 6 weights 1-.50 -.25 -.15 - .10 -.05





Largest weight 1 Troy oz complete weight 2 Troy oz

4 weights 1- $\frac{1}{2}$ $\frac{1}{4}$ $\frac{1}{4}$



Nested cup weight set

Also called encased or Enclosed set of weights



Largest weight 1 Troy oz





Largest weight $\frac{1}{2}$ Troy oz

Nested cup weight set





1 oz and a 1/2 oz set of Enclosed cup weights.



